


IN EPIPHANĪA DOMINI


(Duplex I classis)

Intr.

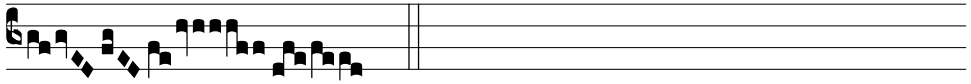


C-CE * advé- nit domi- nár-tor Dó- mi- nus: et re-
gnum in ma- nu e- jus, et po- téstas, et impé- ri-
um. *Ps.* De- us, ju-dí-ci- um tu-um Re-gi da: * et justí-ti- am
tu- am Fí- li- o Re-gis. Gló-ri- a Patri E u o u a e

Grad.



- MNEŠ * de Ša- ba vé-ni- ent,
au- rum et thus de-fe-réntes, et laudem Dómi-no an-
nun- ti- ántes. *∇.* Surge,
et il-lumi-ná- re Je-rú- sa- lem: qui-
a gló- ri- a Dó- mi- ni su- per te * or- ta est.

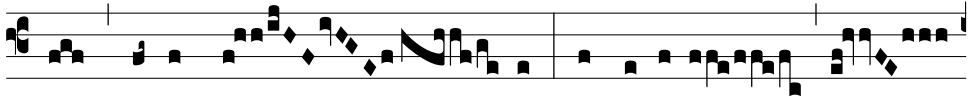


II.

A



L-LE-LÚ-IA. * *ij.* ∇. Ví- di- mus



stel-lam e- jus in O-ri- én-



te, et vé- ni- mus cum mu-né- ri-



bus a- do-rá-re * Dó- mi-num.

Offert.
5.

R



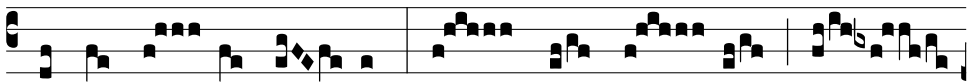
EGES Tharsis * et ín- su- læ mú- ne- ra



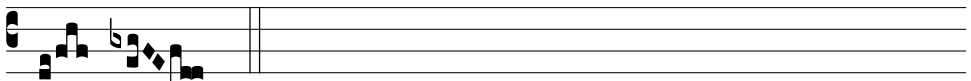
óf- fe- rent: re-ges A- ra- bum et Sa-ba



do- na ad- dú- cent: et a-do-rá- bunt e- um



omnes re- ges ter- ræ, * o- mnes gen- tes sér- vi-



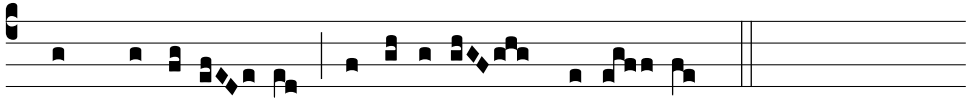
ent e- i.

Comm.
4.

V



I- DI- MUS * stel-lam e-jus in O- ri- énte, et vé- ni-mus



cum mu-né-ri- bus a-do-rá-te Dómi- num.